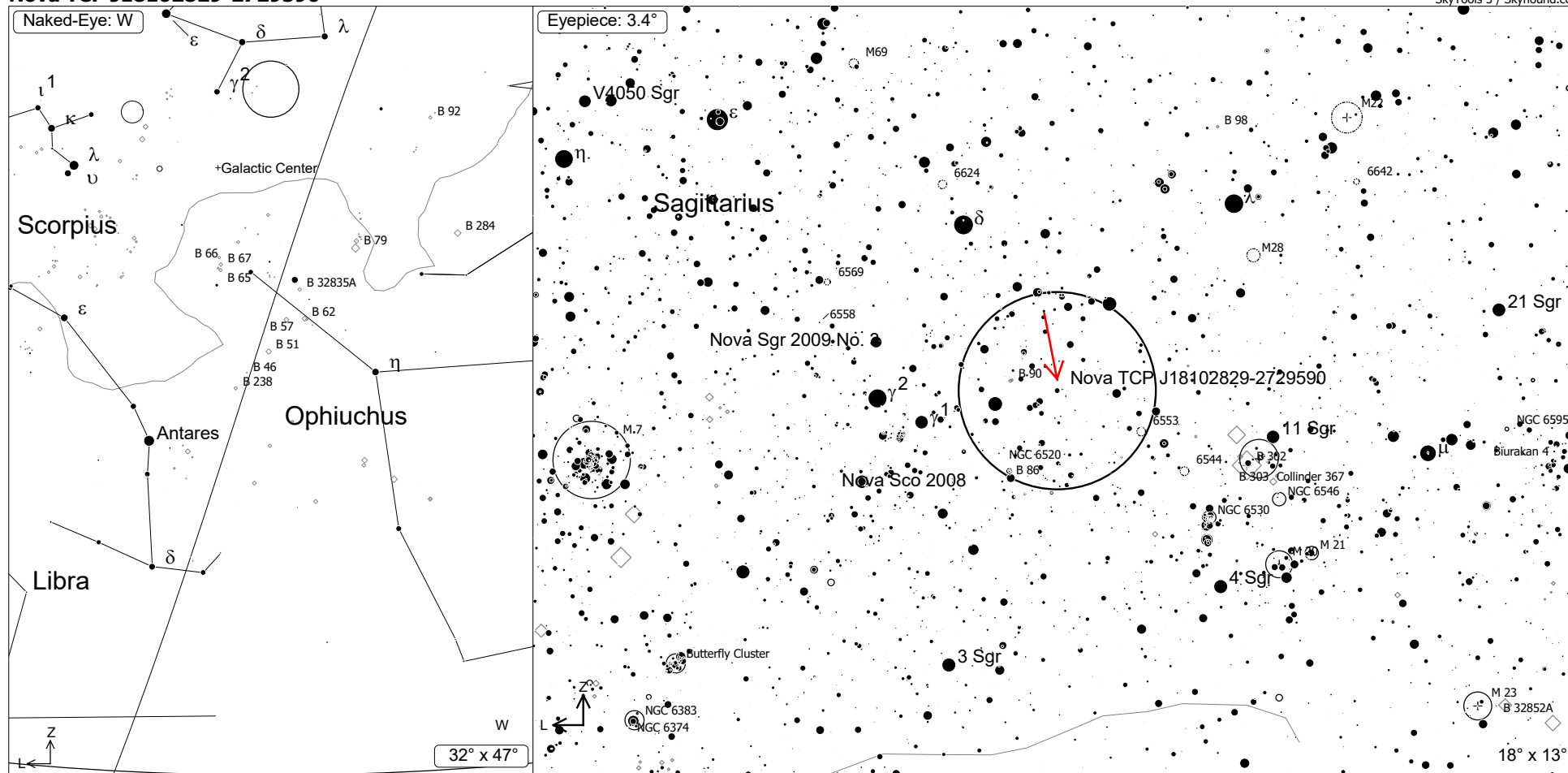


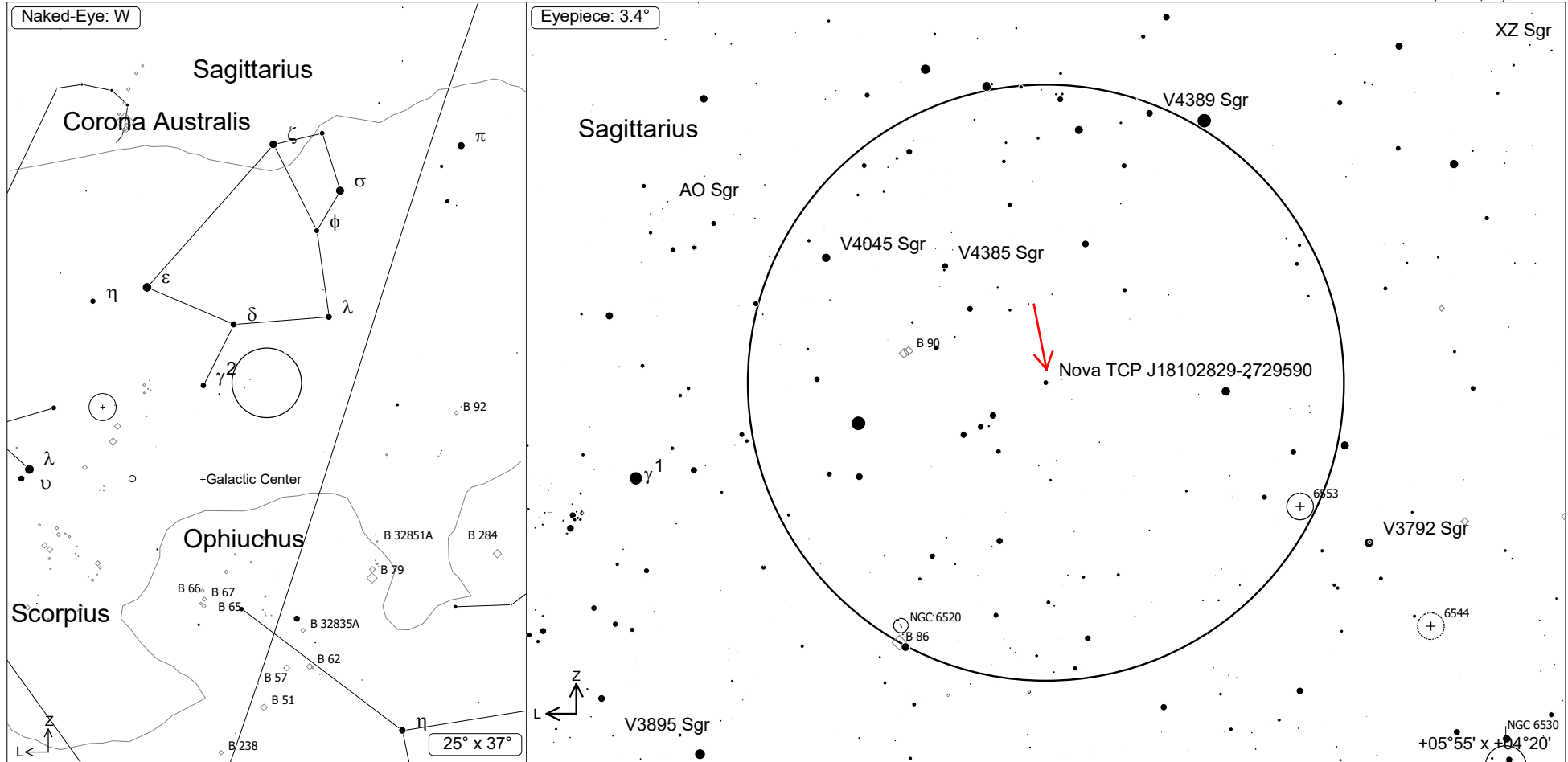
Nova TCP J18102829-2729590



2016 October 25 19:59, Bloemfontein, South Africa
 Fully dark ML 10.0 target detectable
 20X80, eyepiece
 Nova TCP J18102829-2729590 (Single Star)
 R.A.: 18h10m28.3s Dec.: -27°29'59" J2000 (Sgr)
 Magnitude: 7.90

- Galaxy
- ⊙ Galaxy Gr.
- ⊕ Planetary
- ▣ Nebula
- ◇ Dark Neb.
- ◆ Globule
- ⊗ Open Cl.
- ⊕ Globular Cl.
- 3
- 4
- 5
- 6
- 7
- 8
- 9
- 10

Nova TCP J18102829-2729590



2016 October 25 19:59, Bloemfontein, South Africa
 Fully dark ML 10.0 target detectable
 20X80, eyepiece
 Nova TCP J18102829-2729590 (Single Star)
 R.A.: 18h10m28.3s Dec.: -27°29'59" J2000 (Sgr)
 Magnitude: 7.90

- Galaxy
- ⊙ Galaxy Gr.
- ⊕ Planetary
- ☒ Nebula
- ◇ Dark Neb.
- ◆ Globule
- ⊗ Open Cl.
- ⊙ Globular Cl.
- 3
- 4
- 5
- 6
- 7
- 8
- 9
- 10